

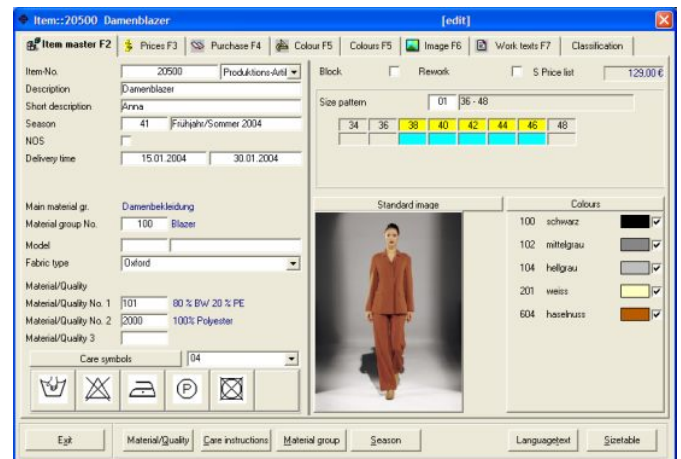
# ImPuls fashion



# ImPuls fashion

## Merchandise Information System - for textile trade and production

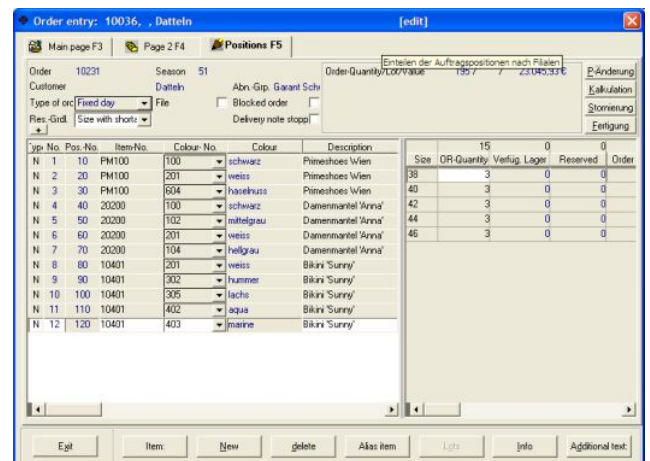
ImPuls fashion is an integrated software solution from production to the point of sale. It offers also a shop in shop option with our own or foreign cash register. EDI/XML will be supported in any characteristics. ImPuls fashion rationalised today - independent from the size of your company - all possible tasks of a merchandise management and secretarial work. Beginning from the product development and planning of a collection to PDM, offers to customers, inventory control and disposition, to orders and thereby the following order processing with material logistics, fabrication, subcontracting, order management, reservation, supply, invoicing, deadline monitoring to financial integration, commission calculation and return of goods: all of these transactions will be done from ImPuls fashion. With ImPuls fashion you are able to adjust your own forms for delivery notes, invoices, orders, lists, statistics, collections- and sketch-books. An integrated projection-system provides you with data for disposition of finished goods and materials. The production planning system shows capacity and materials inquiries (Supply-Chain-Management-SCM). By integration of our module "ImPuls mobile" you dispose of all data and



information at fairs, in showrooms and customer calls. You can switch on ImPuls e-commerce as b2b- and b2c-solution with an online- and/or offline-order entry. Through a language module it is cross national applicable. An online help is to your disposal in the program setting directly.

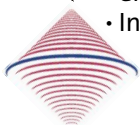
## ImPuls up to date...

ImPuls fashion is a program of the 32 bit generation and as an open system designed for a sql-database. This client-server-conception assures an outstanding performance and high level of data security. The internal flow of data, also to your customers, suppliers and banks is guaranteed through EDI. ImPuls fashion interacts with all actual Microsoft products like Word, Excel, Access etc. The automatic resubmission of important dates and a workflow is also integrated.



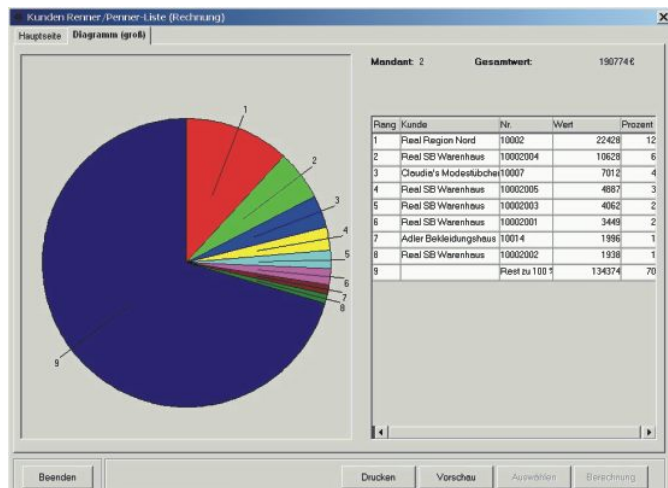
## ImPuls fashion

- Open system with sql-database e.g. Sybase, DB2, MS-SQL
- run capable under Windows/Linux
- Windows surface
- Integration of MS-OFFICE packages
- email + fax
- Internet connection



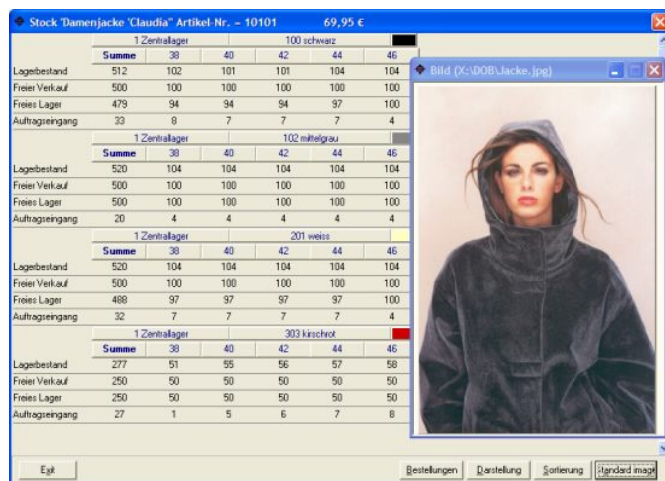
## Customizing

ImPuls fashion uses central administration systems, which are identical in terms of structure and handling. They serve for searching, selecting, sorting and assembling in detailed informations. You can adjust the structure of the particular browserlist yourself according to your own requirements and - similar to Excel- move fields and thereby guarantee individual customizing. In addition to being able to specify additional details of special conditions, addresses, personal data and information, ImPuls fashion provides the possibility to enter pictures, sketches of your items and materials. Pictures can also be added for customers, contacts or representatives etc. and birthdays monitored (Customer-Relationship-Management-CRM). ImPuls fashion boasts a project management in which all informations, written correspondence, evaluations and lists can be assigned to a single procedure.



## Statistics, analysis and calculations

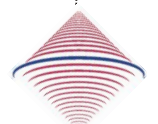
There are statistics and analysis about customers, suppliers, representatives, items, orders, turnover, material and production. Take a look at the stock inventory: this window can show you the various stock level of an article by colour and size with pictures. In addition to this ImPuls fashion provides the possibility of looking at the individual colours of an item and how many will be available on a specific delivery date or how many open purchase orders respectively production orders are scheduled. So you can recognize immediately whether you can meet a customers requirement. With an OLAP tool you can also generate your own analysis in graph form.



## Communication -email, internet and fax

All forms for customers, suppliers and shipment paper can be send directly per email, fax and/ or EDI. Branch offices and subsidiaries, representatives/ sales and members of technical staff are able to log on the ERP- system from every

location in the world. With the TAPI function of your telephone system you can reach directly your dialog partner over ImPuls fashion. There are also audit proof archiving systems included.



# ImPuls fashion

## ImPuls mobile / e-commerce

ImPuls mobile is the order entry for representatives/ sales and allows you the simply and safely input of orders straight at the customer, at fairs, in showrooms etc. This can be done offline/online. Customer, items, prices, on-hand inventories and delivery times will be displayed. There are also statistical informations for the sales force.

## Version notebook



## Version pocket pc



## Our company

We are a competent partner for Merchandise/ ERP-systems since 1975. With over 50 employees at two locations and more than 300 customers at home and abroad we deliver and provide - if desired - as general contractor:

- Organisation
  - Standard-software
  - Program development
  - Hotline
  - Hard- and middleware
  - Technical support
- all from one source !

ImPuls AG

Head office: Dießemer Straße 163 D-47799 Krefeld  
Tel 0 21 51 - 853-3 Fax 0 21 51 - 853-401  
eMail info@impuls.de  
www.impuls.de

Development: Hannoversche Str.57 D-28857 Syke/ Bremen  
Tel 0 42 40-93 23-0 Fax 0 42 40-93 23-24